



# MG SERIES FRONT/REAR ACCESS FINE PITCH LED DISPLAY

MG SERIES MG009 / MG012 / MG015 / MG018 / MG025



MG series is the new generation fine pitch solution with front/rear access functionality and identical form factor of Leyard TWS series. By utilizing Leyard's many years experience of fine pitch and adopting the minimalism concept, MG series achieves the high quality visual performance at a relatively low cost. The appearance of the MG series is carefully designed. The key components are well integrated into the compact shape while the heat dissipation is guaranteed. A function diagnostic button and status indicators could also be found on the panel. MG series has the realize signal loop backup feature in default, and power backup and receiving card backup are optional.

## KEY FEATURES



HDR Ready



16:9 Aspect Ratio



Generic Cables



Status Diagnostic



Front/Rear Access



Floating Connector



Quick Installation



6-axis Alignment



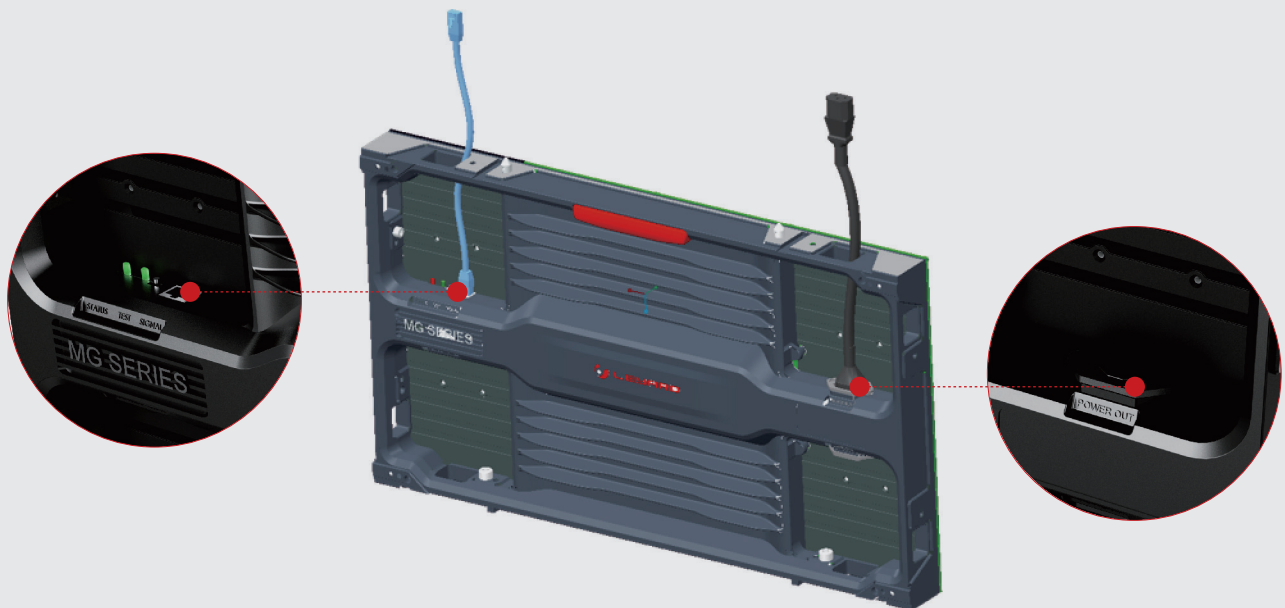
Easy Maintenance

## TECHNOLOGY ADVANTAGES



### Generic Cables

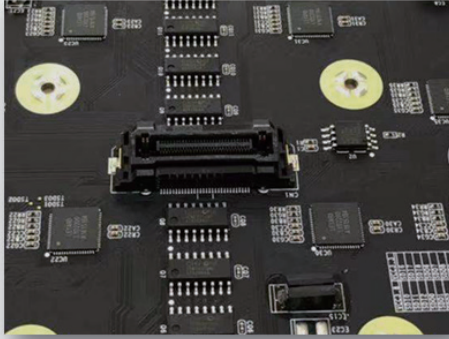
- > Concise appearance, off the shelf power and signal, ensuring the stable and reliable quality at a very low cost;
- > Cables between cabinets are connected inside, without adding up extra space.



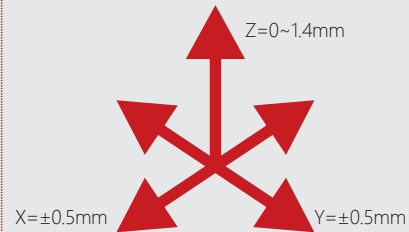


## Floating Connector

- > Allowed position tolerance;
- > Resistant to torsion and shock;
- > Reduces stress on solder feet during fitting.



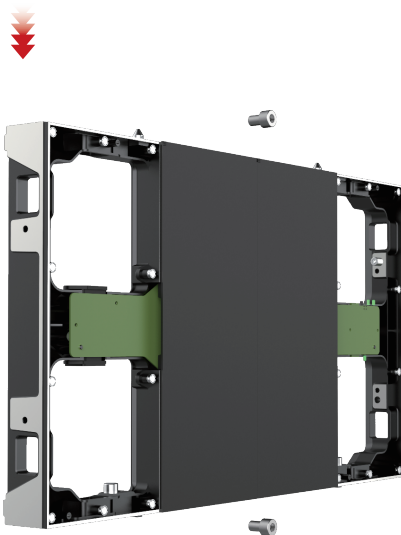
## Chimeric Correction



## Front / Rear Installation

- > Completely front disassembly or rear disassembly;
- > Only need to remove two LED modules for easy maintenance.

- > Easier rear installation.

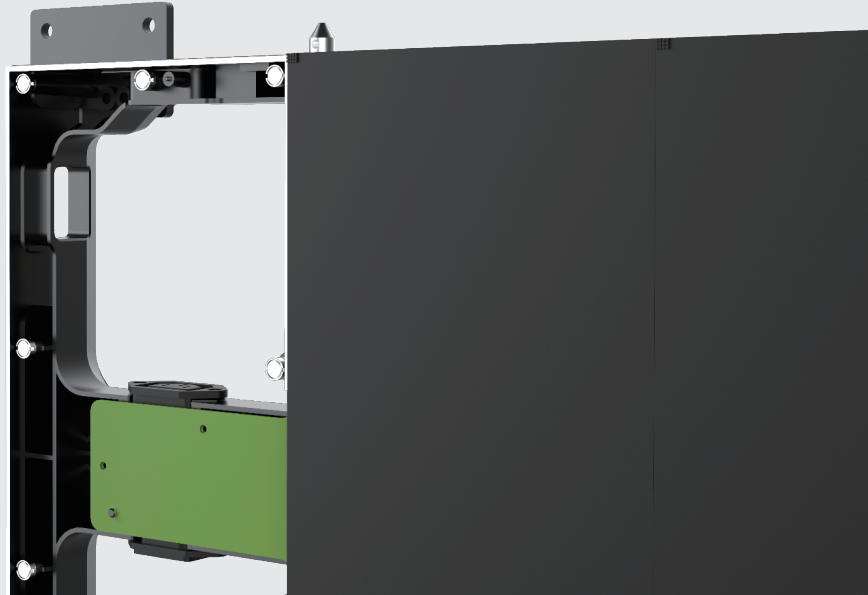


**XYZ**

## 6-axis Alignment

- > Module can be easily adjusted in Z-direction, and flatness can be optimized again.
- > A uniform tool can be used for X/Y/Z 6-axis adjustment between cabinets.

Z-direction



**HDR**

## High Dynamic Range(Optional)

Support HDR function to meet more display requirements.



HDR



SDR



## Status Diagnostic

Status indicators and button are in the main frame of the cabinet structure, and can be accessed from both front and back.



## Aluminum Alloy Cabinet

- > Aluminum alloy cabinet with high rigidity and high splicing accuracy;
- > Magnetic and vacuum tools are optional for maintenance.





---

## APPLICATIONS



# SPECIFICATION

Item	MG009	MG012	MG015	MG018	MG025
LED Configuration	SMD	SMD	SMD	SMD	SMD
Pixel Pitch (mm)	0.9375	1.25	1.5625	1.875	2.5
Module Resolution ( WxH )	160x360	120x270	96x216	80x180	60x135
Module Dimension (WxH, mm)	150x337.5	150x337.5	150x337.5	150x337.5	150x337.5
Module Composition (WxH)	4x1	4x1	4x1	4x1	4x1
Cabinet Resolution ( WxH )	640x360	480x270	384x216	320x180	240x135
Cabinet Dimension (WxHxD, mm)	600x337.5x53 (Front Access), 600x337.5x64 (Front&Rear Access)				
Cabinet Area (m <sup>2</sup> )	0.2025	0.2025	0.2025	0.2025	0.2025
Weight (kg/cabinet; kg/m <sup>2</sup> )	6; 30 (Front Access), 7; 35 (Front&Rear Access)				
Pixel Density (Point/m <sup>2</sup> )	1137777	640000	409600	284444	160000
Flatness(mm)	≤0.1	≤0.1	≤0.1	≤0.1	≤0.1
IP Level	IP30	IP30	IP30	IP30	IP30
Brightness (nits)	600~800	600~800	600~800	600~800	600~800
Color Temperature ( K )	3000~10000				
Viewing Angle (H/V) °	160/140	160/140	160/140	160/140	160/140
Deviation of LED luminance Center	<3%	<3%	<3%	<3%	<3%
Brightness Uniformity	≥98%	≥98%	≥98%	≥98%	≥98%
Contrast Ratio	5000:1	5000:1	5000:1	5000:1	5000:1
Power Consumption (max; avg)/m <sup>2</sup>	500W; 167W	500W; 167W	500W; 167W	500W; 167W	500W; 167W
Chromaticity Uniformity (after correction)	± 0.003Cx,Cy within				
Input Voltage(V)	AC100~240V ( 50~60Hz )				
Installation	Front / Rear				
Drive Mode	Common anode	Common anode (Common cathode PWM optional)	Common anode (Common cathode PWM optional)	Common anode	Common anode
Refresh Rate @60Hz	≥3840	≥3840	≥3840	≥3840	≥3840
Frame rate Processing ( Hz )	50&60	50&60	50&60	50&60	50&60
Lifetime(hrs)	100,000	100,000	100,000	100,000	100,000
Operating Temperature ( °C )	-20—40	-20—40	-20—40	-20—40	-20—40
Storage Temperature ( °C )	-30—60	-30—60	-30—60	-30—60	-30—60
Operating Humidity ( RH )	10~90% no condensation				
Storage Humidity ( RH )	10~80% no condensation				

Remark: Above data is subject to change without prior notice



LEYARD  
STOCK CODE: 300296

## SHENZHEN LEYARD OPTO-ELECTRONIC CO., LTD

ADD: Block 2/3/4, Jia'AnDa Industrial Park, Dalang, Longhua, Shenzhen, 518109, China.

Tel: +86-755-2819-7999 / Fax: +86-755-29671239

Email: intlmarketing@leyard.com / Website: sz.leyard.com